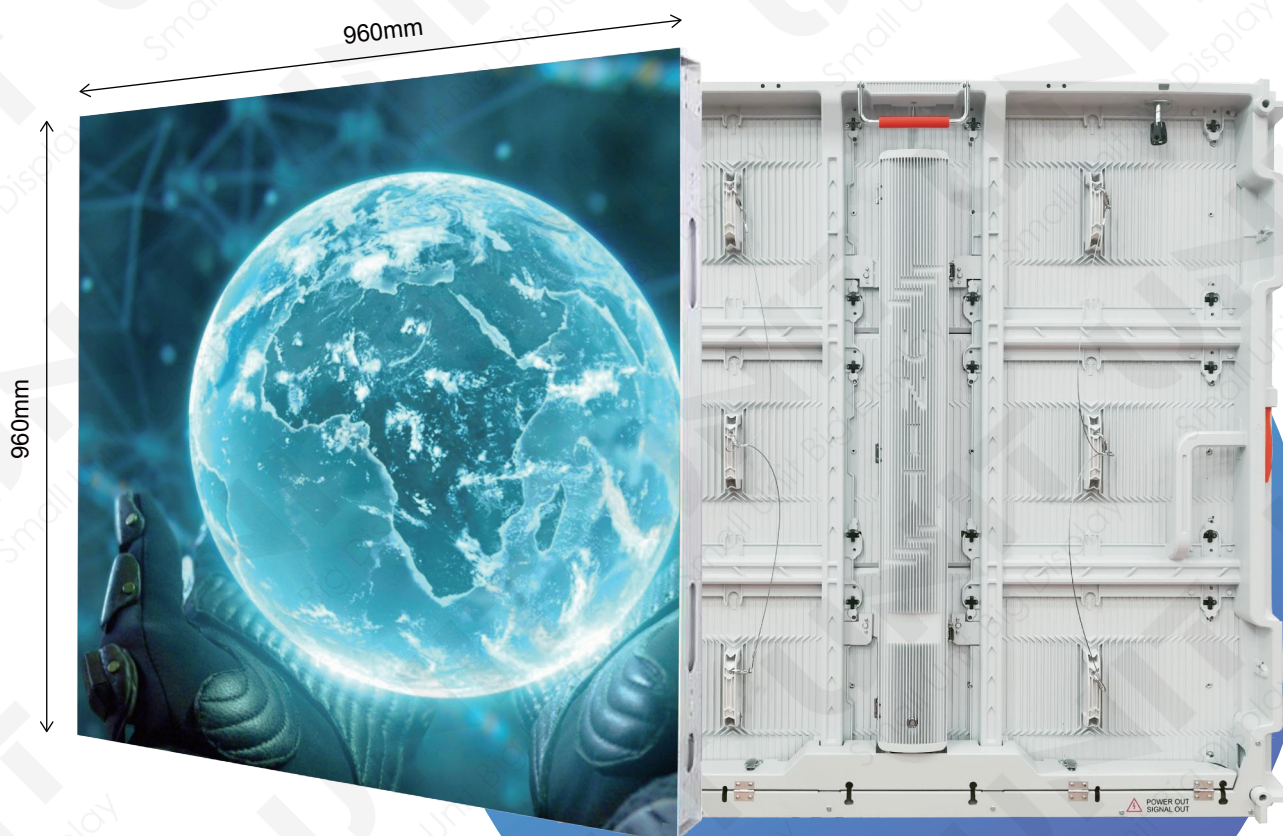


High Quality Outdoor Energy Saving LED Display

ES960 Series

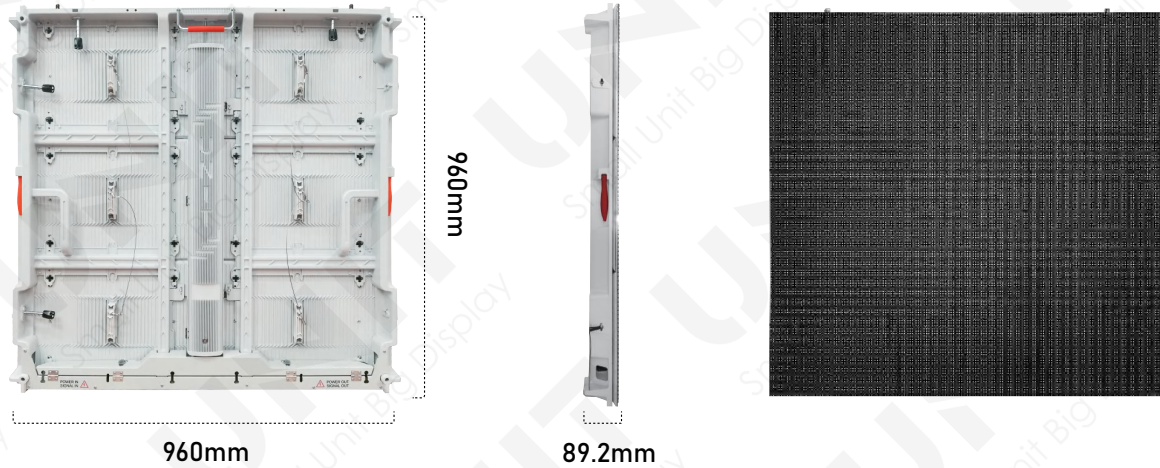
The ES960 series energy-saving LED display is the latest common cathode aluminum display with a size of 960*960mm.



ES960-P4.4/5.7/6.67/8/10

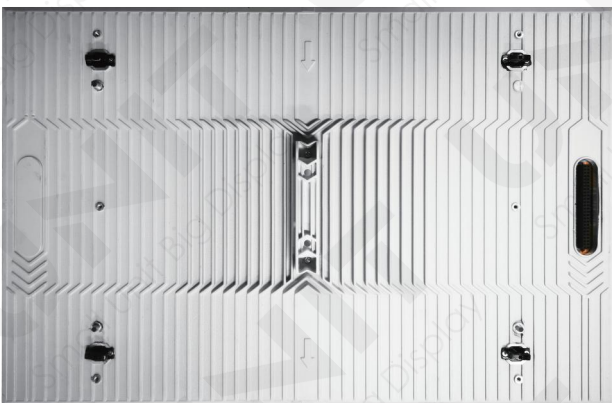
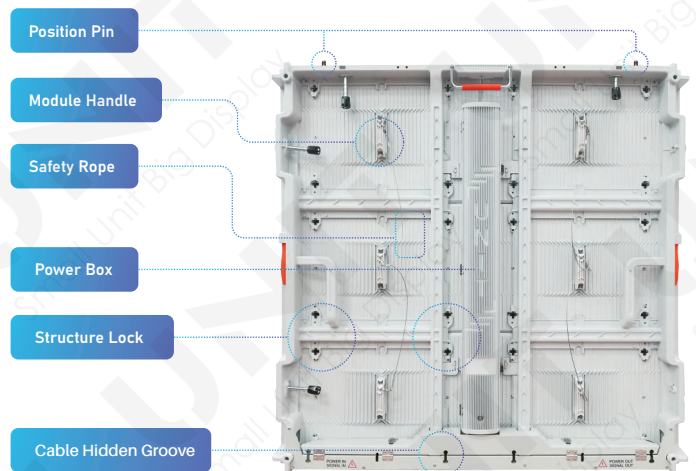
ES960 Series Outdoor Energy Saving LED Display

The ES960 series energy-saving LED display is the latest common cathode aluminum display with a size of **960x960mm** and a high IP66 waterproof level. It features a unique panel design with a size of **480x320mm**. It has ultra-low heat and power consumption, providing an excellent visual experience.



Excellent Design

Excellent cabinet design with module layout, back cover, location tab, fast lock, module handle, and more. **Two frames for your choice: aluminum & die-cast aluminum.**

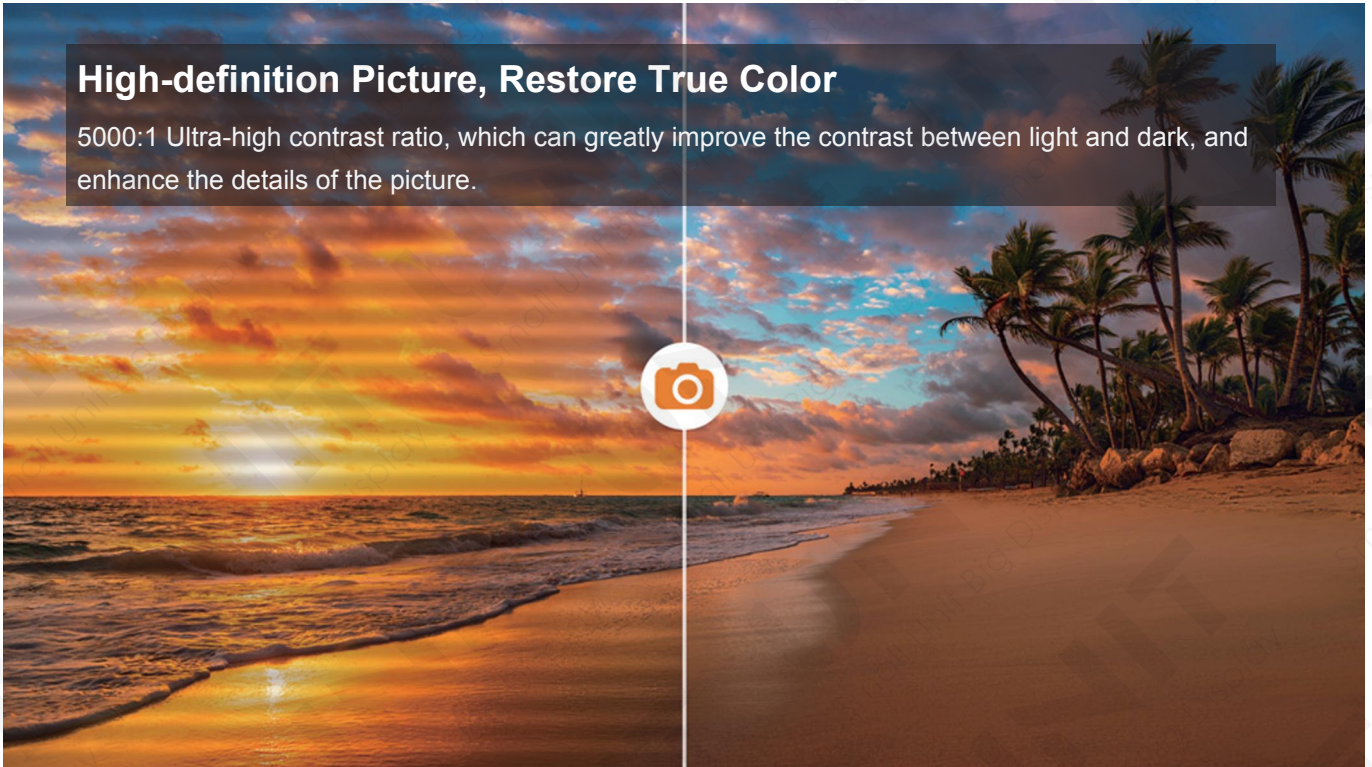


Unique LED Module

Each LED module is equipped with a safety harness to prevent the module from falling and hitting people. Unique LED display panel design with **480*320mm** and **960*960mm** cabinet size. The weight of a single module is **just 2kg**.

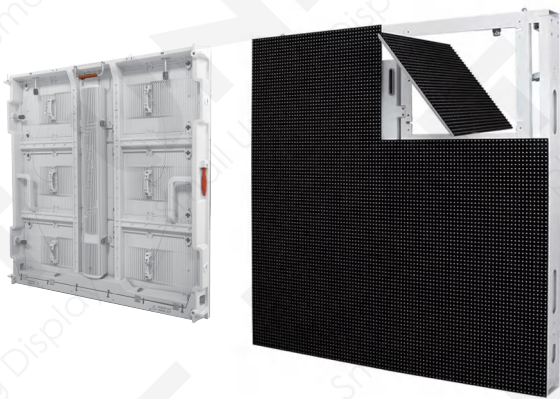
High-definition Picture, Restore True Color

5000:1 Ultra-high contrast ratio, which can greatly improve the contrast between light and dark, and enhance the details of the picture.



Ultra Light Weight

Lightweight, reliable quality, convenient for quick disassembly and installation, saving a lot of labor and time.



25 kg

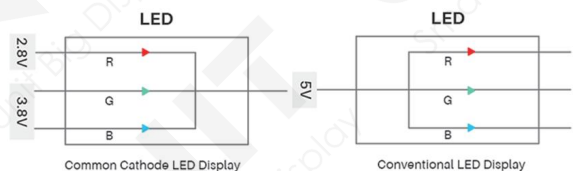


Front and Rear Service

Full waterproof, fully-sealed design and die-casting aluminum module chassis, offering high protecting rating (front and rear) IP66.

Recycling, Environment-friendly and Economical

ES960 is a common cathode LED display with a die-cast aluminum chassis, providing lifetime and good heat dissipation performance for the whole product. The whole product can be **recycled with a rate of 90%**.



High Quality With Global Standards,
CE EMC, RoHs, FCC Certificated.

Specification

Pixel Pitch	P4.4mm	P5.7mm	P6.67mm	P8mm	P10mm
Pixel Density (pc)	216×216	168×168	144×144	120×120	96×96
LED sealing Type	SMD1921	SMD2727	SMD2727	SMD2727	SMD3535
Module Size (mm * mm)	480×320				
Module Resolution (PX* PX)	108×72	84×56	72×48	60×40	48×32
Brightness (cd/m²)	5000	5500	5500	6000	6000
Grey Scale (bit)	≥14				
Refresh Rate (Hz)	≥3840Hz				
Maximum Cabinet Power Consumption (W)	550	550	550	550	600
Average Cabinet Power Consumption (W)	300				
Cabinet Size (mm * mm)	960×960				
Cabinet Weight (Kg)	25kg				
Cabinet Thickness(mm)	87				
Horizontal Viewing Angle (Deg)	160				
Vertical Viewing Angle (Deg)	140				
Input Voltage (V)	110-220V/200-240V				
Working Temperature (°C)	-20~ +40				
Working humidity (RH)	10%~90%				
Storage temperature range	-40~ +80				
Operation humidity (RH)	10%~90%				
Waterproof Level	IP66				
working life	50000h				
Working Environment	Outdoor				
Installation	Fixed Installation				
Maintenance	Front & Rear Access				