

# Naked-Eye 3D LED Display Solution

Hardware + Software/Product + Controller

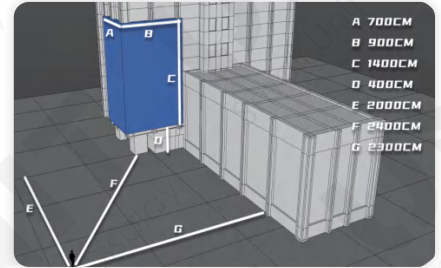
*We have built a professional team to produce the Naked-3D project.*



- EV960 Series
- OF800 Series
- MA960 Series

# Naked-Eye 3D LED Display Is Designed with Multi-view Technology

3D LED displays/Naked-eye 3D LED displays are three dimensional displays that do not require any glasses or extra equipment to view the 3D image. Viewers can see the three-dimensional image with their naked eyes without needing to wear glasses. The naked eye 3D effect is formed through the principle of two-point perspective of the human eyes.



## Applications of 3D LED Display

### Outdoor Applications

Size for Indoor: Above 3sqm  
 Size for Outdoor: At least 100sqm,  
 height from the ground at the bottom  
 should not be more than 10m.



• DOOH/Old Building Revolution



• Shopping/Media Facade

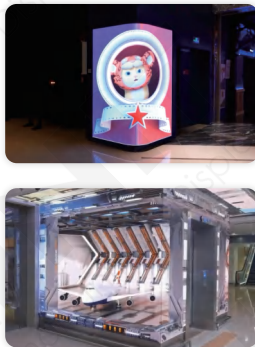


• Center of Business District

### Indoor Applications



• Marketing



• Shopping Mall



• Retail Store

### Video Rendering Styles



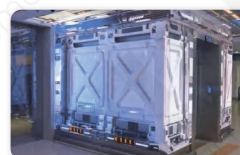
• Modern Style



• 3D Product Style



• Anime Style



• Mechanical Style



• Cartoon Style

## What Can Our Team Bring to You

Category	Main points
3D Naked-eye LED display	(1) 90° right angle curved installation, LED display installation blends with the installation building to achieve 3D display surface; Curved part for custom size to achieve good curved display effect; (2) LEDs have high color, high brightness, and can display properly in direct sunlight conditions; The color of the LED display is perfectly integrated with the ambient light; (3) Drive ICs support high grayscale, 3840Hz refresh rate, HDR high dynamic contrast, low power consumption and energy saving.
Controller	Support high-resolution synchronous controller; Professional decoder supports material mapping and correction functions for shaped display carriers, and supports underlying optimization of high bit stream decoding.
Playback program	Customized 3D playback of video programs requires selecting the main view based on the perspective relationship of the display model for three dimensional construction. Point-to-point resolution customization ensures the best display effect. We recommend using the HAP format.

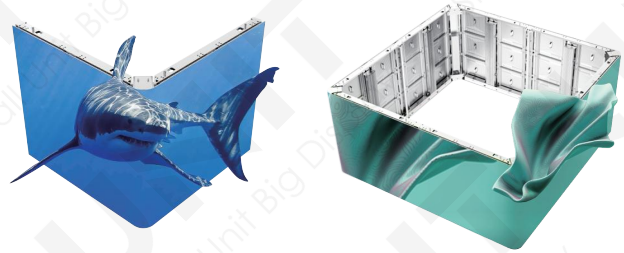
## EV960 VR Outdoor LED Display

- P6.67 and P10 available for curved 3D LED screen;
- Cabinet size for the curved section 120×960mm;
- Support front and rear maintenance, easy and convenient operation;
- Module waterproof design, front and rear waterproof grade IP66;
- High Brightness 6000-10000 cd/m<sup>2</sup>.



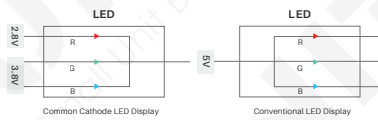
## EV960 3D LED Panel

- Curved LED display, allowing seamless splicing;
- Standard size cabinet with 960×960mm dimension;
- Super quick installation and maintenance;
- High protection aluminum chassis panel design.



## Saving power

The CCES technology and dual voltage output can save more power consumption.



## Saving space

Dual services available, EV960 LED panels support rear maintenance that does not need back room.



## Saving installation cost

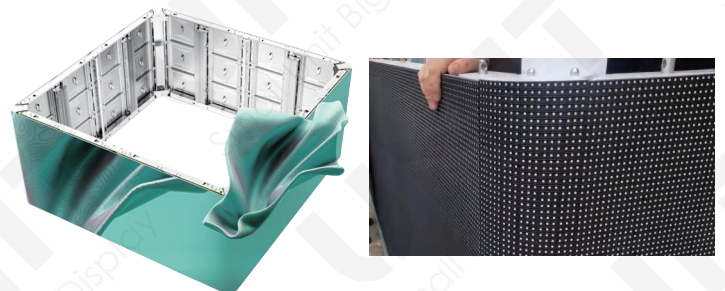
With weight of only 28kg/sqm and depth of only 75mm, the cabinet can save you more transportation costs by needing less room. Moreover, it is easier to maintain and service.

28kg



## Seamless splicing

Seamless splicing, die-casting aluminum modules achieve seamless splicing and high flatness for naked-eye 3D applications.



## OF800 VR Series Outdoor LED Display

- Compatible with P3.125/P4.16/P5/P6.25/P8.33/P10mm;
- Cabinet size for the curved section 450×1200mm;
- Support front and rear maintenance, easy and convenient operation;
- Module waterproof design, front and rear waterproof grade IP65;
- Seamless screen ensuring a good curved display effect with a brightness of 6000-6500 cd.



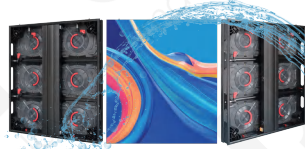
## OF800 Curved LED Display Screen

- Curved LED display, allowing seamless splicing;
- Unique cabinet design with 800×900mm and 800×1200mm ;
- Front service for easy installation and disassemble.



### High waterproof ability

Both frontal and back protection ability can reach IP65.



### Great visual performance

High brightness level, high definition LED panel, high contrast ratio of 5000:1.



### Seamless splicing

Die-casting aluminum modules achieve seamless splicing and high flatness for higher quality naked-eye 3D applications.



## MA960 Series Outdoor LED Display

- Compatible with P4/P5/P5.926/P6/P6.67/P8/P10;
- 3D LED screen module size 80×160mm/94.8×160mm/48×192mm;
- Support rear maintenance, easy and convenient operation;
- Module waterproof design, front and rear waterproof grade IP65;
- Brightness is 6000-10000 cd/m<sup>2</sup>;
- Curved LED display, allowing seamless splicing;
- Standard size cabinet with 960×960mm dimension;
- Super quick installation and maintenance.



### Ultra lightweight cabinet

High precision aluminum cabinet frame makes seamless splicing image and video display.

28kg

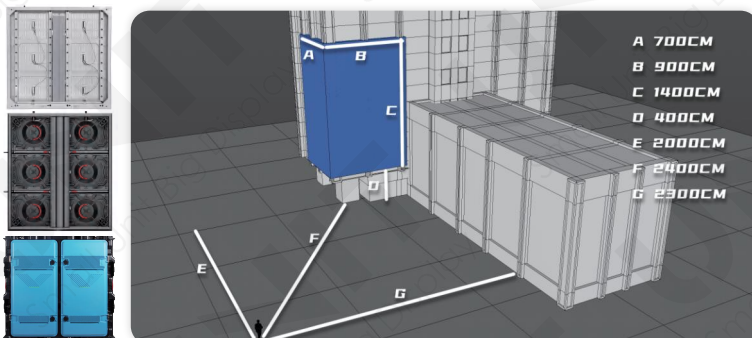


### Seamless splicing

Equipped with unique lock, the position of each cabinet can be precisely adjusted from six directions, so every cabinet can be positioned to the exact place.



### What Information Do We Need?



- Structural diagram of the screen (flat and corner) Specifications (such as pixel pitch and screen resolution) The length of ABCDF in the figure Viewing position photos or videos

- Products and IP roles provide three-dimension models, etc.
- Creative Ideas of the video content
- Video content at least 15 seconds