

# Indoor COB LED Display Screen

## Unit LED-MA600 COB Series

The MA600 COB series offers high resolution, superior image quality, and excellent durability, making it ideal for environments like broadcast studios and control rooms. With its seamless design and wide viewing angles, it provides a stunning visual experience in indoor settings.



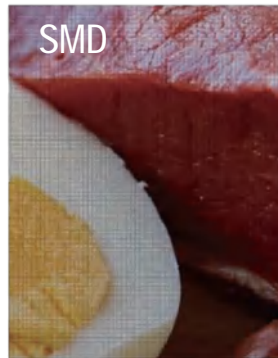
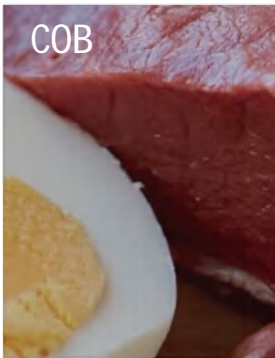
MA600 COB-P1.25/1.5625/1.875

## MA600 COB Series HD LED Display

### Wide Color Gamut +HDR & HD Resolutions

High color coverage, precise reproduction of natural colors, making the picture more realistic.

HDR can reproduce the high peak of high dynamic range imaging and display more details;

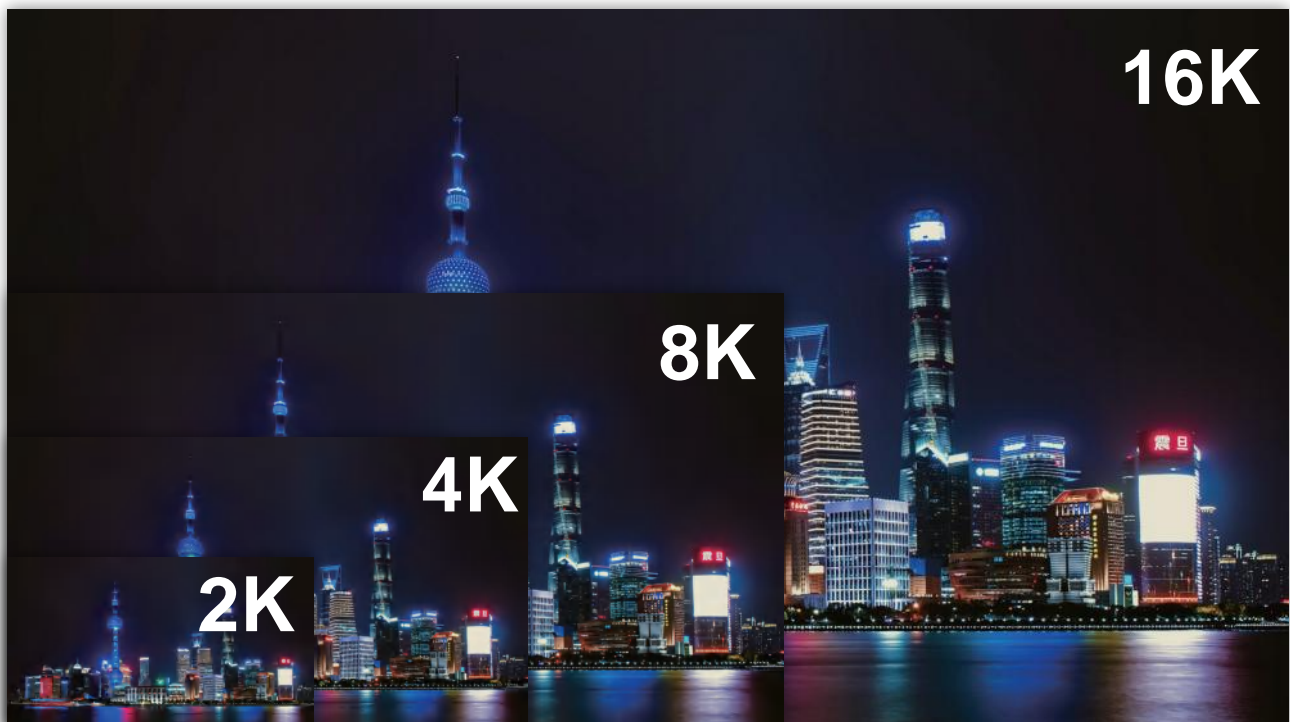


### COB Comfort Display

COB packaging achieves better video optical performance through chip level packaging, with more comfortable and soft image quality without significant pixel graininess, making it more suitable for applications under conditions such as "closer range", "indoor ambient light", and "longer long-term viewing".

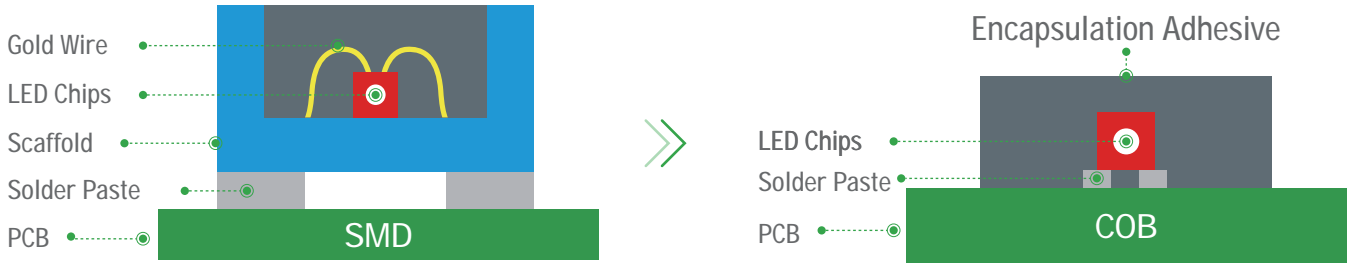
### 16:9 Aspect Ratio

Seamless splicing of 2k, 4k, 8k, 16k ultra high definition resolution screens.



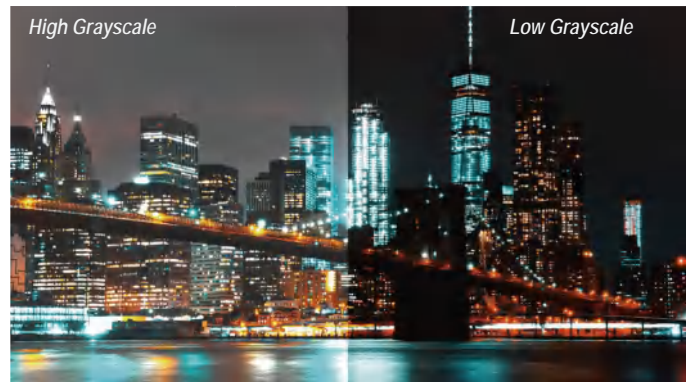
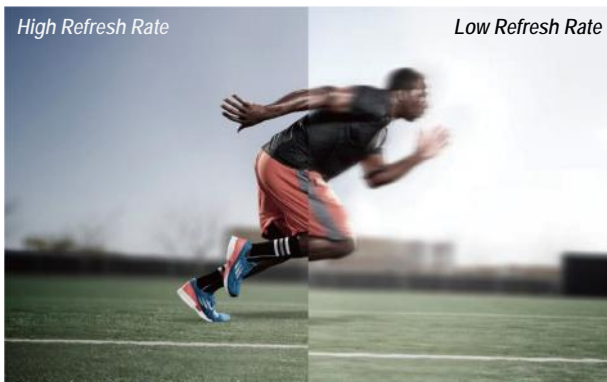
## Good Heat Dissipation & Common Chatode

The positive and negative electrode of the LED chip in the COB is directly connected to the circuit on the PCB, with the shortest heat conduction path, no intermediate medium, the minimum thermal resistance, better heat dissipation effect than SMD discrete devices , and better power saving effect.



## Refresh Rate And Grayscale

High refresh rate ensures smooth, blur-free motion and precise grayscale rendering, while low refresh rate causes motion blur and reduced detail clarity.



## 3-Proof COB Displays

Due to the small spacing of conventional SMD small-pitch displays, the exposed LED beads face waterproof, dustproof, and impact-resistant challenges, and may even fall off during transportation. COB integrated packaging overcomes these SMD limitations, achieving true waterproofing, dust prevention, and impact resistance.



1:1  
RATIO

CONTRAST

MODULAR

LOW NOISE

24/7  
OPERATION

COLOR

EASY  
INSTALL

WIDE VIEW

SCALABLE

High Quality With Global Standards,  
CE EMC, RoHS, FCC Certificated.

## Specification

| Pixel Pitch                                | P1.25mm                                  | P1.5625mm                                | P1.875mm                                 |
|--|--|--|--|
| Number of Scan                             | 45S                                      | 54S                                      | 45S                                      |
| Module Resolution (Pixel)                  | 120×135                                  | 96×108                                   | 80×90                                    |
| Module Size(mm)                            | 150×168.75                               | 150×168.75                               | 150×168.75                               |
| LED Type                                   | COB                                      | COB                                      | COB                                      |
| Cabinet Size (mm)                          | 600×337.5                                | 600×337.5                                | 600×337.5                                |
| Cabinet Weight (KG)                        | 4.5                                      | 4.5                                      | 4.5                                      |
| Brightness (CD/m <sup>2</sup> )            | 1200                                     | 1200                                     | 1200                                     |
| Viewing Angle (°)                          | Horizon 160, Vertical 140                | Horizon 160, Vertical 140                | Horizon 160, Vertical 140                |
| Contrast                                   | ≥30000:1                                 | 30000:1                                  | 30000:1                                  |
| Operation Humidity                         | 10% - 90%                                | 10% - 90%                                | 10% - 90%                                |
| Max. Power Consumption (W/m <sup>2</sup> ) | 310W                                     | 350W                                     | 310W                                     |
| Avg. Power Consumption (W/m <sup>2</sup> ) | 150W                                     | 170W                                     | 150W                                     |
| GS-PQ Engine                               | 13-22bit                                 | 13-22bit                                 | 13-22bit                                 |
| Refresh Rate (Hz)                          | 3840Hz (IC Drivers Can Change To 7680Hz) | 3840Hz (IC Drivers Can Change To 7680Hz) | 3840Hz (IC Drivers Can Change To 7680Hz) |
| Working Temperature (°C)                   | -10 ~ +45                                | -10 ~ +45                                | -10 ~ +45                                |
| Lifetime (Hours)                           | 100000                                   | 100000                                   | 100000                                   |